



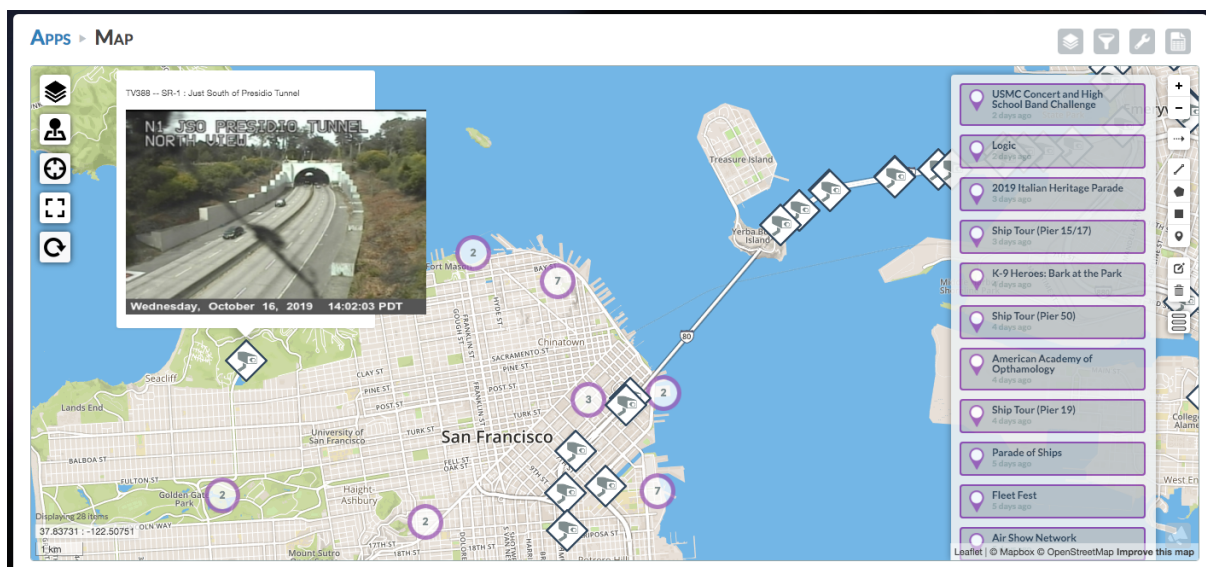
Police • Fire • EMS • Emergency Management • Public Health

The California Common Operating Picture for Threat Awareness (Cal COP) is a cloud-based information-sharing environment available to all public safety agencies within California's eight Urban Areas Security Initiative (UASI) regions.

Purpose

Cal COP leverages local and regional risk management and critical infrastructure assessments — layered with real-time data on man-made and technological threats and natural hazards — to create a common threat awareness picture.

With Cal COP, our users more rapidly and effectively understand California's emerging threat environment across public safety disciplines, agencies and jurisdictional boundaries. Access to the system is managed securely through user-based roles and responsibilities.



Program History and Milestones

- **2009:** First Urban Areas Security Initiative (UASI) risk analysis conducted.
- **2010:** Regional risk analyses, THIRAs and CIKR assessments for eight UASIs conducted.
- **2011:** Situational awareness capabilities added across the UASIs and Fusion Centers.
- **2013:** Statewide sharing initiated with the addition of Cal OES, STAC, CHP and CAL FIRE.
- **2014:** Cal COP statewide situational awareness system operational.
- **2017:** Cal COP recognized as a FEMA Innovative Practice Project.
- **2020:** Received award for recompete of the Cal COP Program (incl. cybersecurity scope).





Core Use Cases

- Regional risk analysis for UASI grant funding
- Critical infrastructure asset management, with threat and vulnerability assessments
- Special-event management and regional/statewide situational awareness
- Statewide threat awareness common operating picture



85% of CA Population; 45K+ CIKR Assets

Core Features & Capabilities

- Risk, Threat & Capability Assessments
- CIKR Asset Management
- Special-Event Management
- Statewide Threat Awareness
- Mobile Field Apps
- Notification & Alerts

Participating Agencies

- California Fusion Centers
- California Highway Patrol
- Local Police, Fire, & Emergency Management Departments

Data Sets

- Statewide Critical Infrastructure & Key Resources
- California Special Events
- Local CAD, AVL, and SAR Feeds
- U.S. Health Map
- WebEOC Significant Events
- High-Priority GIS Layers
 - FEMA Flood & Inundation Zones
 - USGS Fault Lines
 - Current Fires w/Perimeters
 - Reservoir Levels
 - Active Pipelines
 - Oil Terminals & Refineries
 - Rail Lines
 - Population Density
 - Wind Speed & Direction
- And more...

Statewide License Eligibility

- All public safety agencies located within the original eight UASI regions.
- Statewide annual maintenance and hosting is funded through the Coalition of California UASIs (CCU).

Testimonials

- “Embodies a unified common operating picture through continuous partnerships and collaborations.”
- “Enhances the region’s risk analysis processes, critical infrastructure protection activities and strategic security planning.”

- Current Cal COP Users

